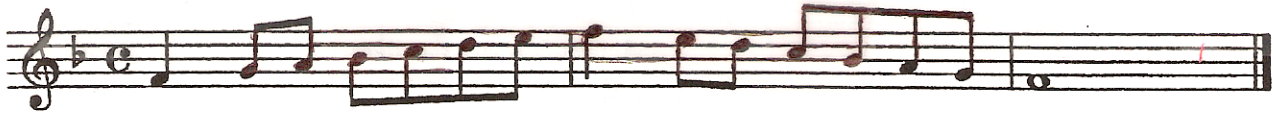


# High Plains Choral Festival Auditions

Please read and follow the audition instructions very carefully! Students will not be considered for the honor choir unless their auditions are completed properly. If you have any questions please contact Joel Schreuder at 308-432-6318

**Scales:** The accompanist may sound the tonic chord at the beginning of each scale. The student should then sing the scale a cappella at about **quarter note = 90**.

- **Sopranos and tenors:** Begin in the key of F major and repeat the exercise three times with each repeat ascending by half step to the keys of F# major, G major, and A-flat major.
- **Altos and basses:** Begin in G major (the lower octave) and repeat the exercise three times with each repeat ascending by half step to the keys of Ab major, A major, and Bb major.



**Arpeggios - Sing the given arpeggios with the written accompaniment.**

**Sopranos and Tenors**

A musical score for Sopranos and Tenors. The top staff is a vocal line in treble clef, 2/4 time signature, with a key signature of one flat. It contains three arpeggiated phrases: 'Ah', 'Oh', and 'Oo'. Below the vocal line is a piano accompaniment consisting of two staves (treble and bass clef) in 2/4 time, with a key signature of one flat. The piano part provides harmonic support for the vocal arpeggios.

**Altos and Basses**

A musical score for Altos and Basses. The top staff is a vocal line in treble clef, 2/4 time signature, with a key signature of one flat. It contains three arpeggiated phrases: 'Ah', 'Oh', and 'Oo'. Below the vocal line is a piano accompaniment consisting of two staves (treble and bass clef) in 2/4 time, with a key signature of one flat. The piano part provides harmonic support for the vocal arpeggios.